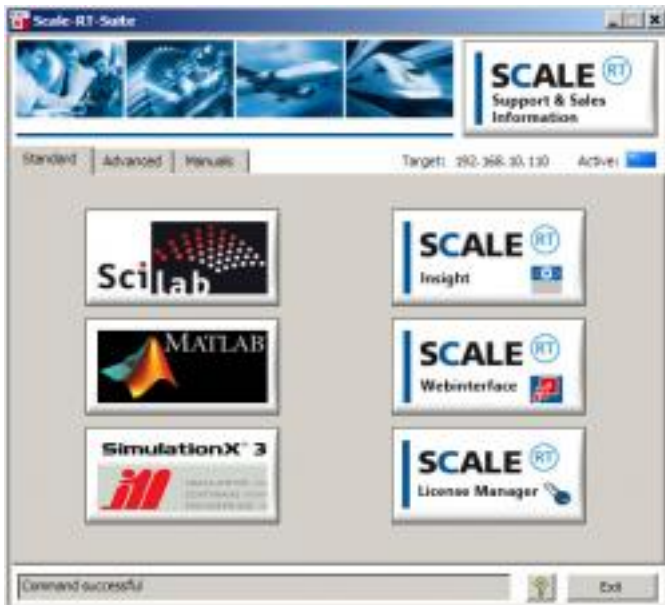


## New: SCALE-RT Version 5.0

Date: 03-26-2009 07:53 PM CET

Category: [Industry, Real Estate & Construction](#)

Press release from: [Cosateq GmbH & Co. KG](#)



More application/performance, extensive Hardware support

The SCALE-RT real-time simulation environment by COSATEQ offers with version 5.0 extended features and higher performance.

The software company extended the API of SCALE-RT and provides connection-oriented model communication using TCP/IP. SCALE-RT now supports direct access to structures internal to the model block (intermediate signals and tunable parameters) to help the engineer by more analyzing capabilities. Version 5.0 advances with extended hardware support for a variety of I/O types, like the cost-efficient M series of National Instruments or the newly developed ARINC429 bus card by COSATEQ. This offers a comprehensive environment for the development of hardware-in-the-loop systems and enables affordable real time simulation even for small companies.

The new software-package includes a drag & drop configurable visualization tool with advanced multi-target support. SCALE-RT Insight allows controlling, visualizing, and measuring model data of different real-time simulation systems within a single user adaptable graphical user interface.

Find download and more information on [www.scale-rt.com](http://www.scale-rt.com).

### About SCALE-RT

The Linux-based SCALE-RT real-time simulation environment offers a flexible host-target prototyping environment for applications running on a cost-efficient PC-compatible hardware. SCALE-RT is a scalable product based on open-source software, which includes the reliable Linux kernel with real-time Xenomai extension. It supports powerful multi-core processor architectures and a wide variety of I/O hardware.

By integrating seamless into simulation tools like Scilab and Scicos®, MATLAB® Simulink® (incl. Stateflow®), SimulationX® or Dymola. SCALE-RT offers a comprehensive software suite for the development of professional applications. SCALE-RT is extremely flexible, cost-effective, and scalable. There are 3 variations of the product available: classic, concert, and opus. See details on [www.scale-rt.com](http://www.scale-rt.com)

About COSATEQ

COSATEQ is a leading company in the field of simulation and control engineering.

The company has attracted highly qualified engineers from areas such as computer science, IT, electrical and mechanical engineering. Its strong workforce are involved in developing innovative solutions for reputable companies operating in the aviation, automotive, engineering, and special solution industries. COSATEQ's development site is based in Wangen/Allgaeu (Germany).

Cosateq GmbH & Co. KG

Sabine Waizenegger

Siemensstraße 12

88239 Wangen

phone +49 7522/974928

[sabine.waizenegger@cosateq.com](mailto:sabine.waizenegger@cosateq.com)

[www.cosateq.com](http://www.cosateq.com)

**[You can find this press release here](#)**