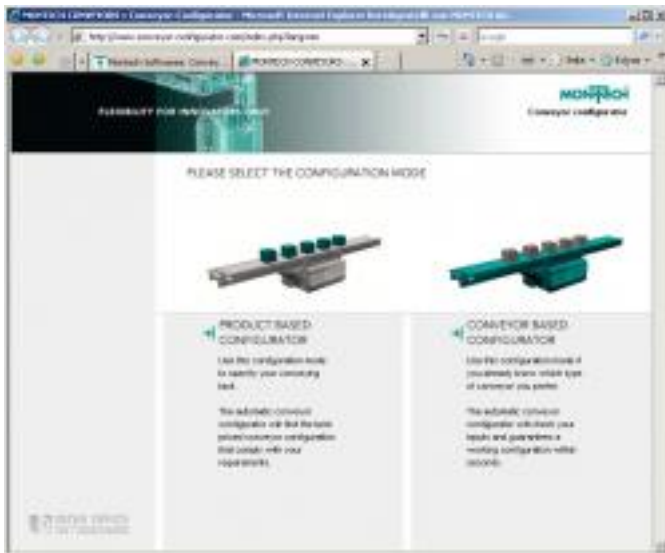


User-friendly belt conveyor configurator

Date: 11-05-2008 06:59 PM CET

Category: [Logistics & Transport](#)

Press release from: [Montech AG](#)



For the users of Montech belt conveyors, it is now even easier to configure a belt according to their specific requirements: the Configurator is now available in a conveyor-oriented and a product-oriented version.

In the product-oriented version, the configurator starts from user requirements and specifications to present a solution based on the best price. At this stage, the system guides the user to provide all necessary information to identify the transport solution. A plausibility check avoids that unsuitable or defective configurations are presented.

The users who have already identified the type of conveyor can use the conveyor-oriented version. "With the new belt conveyor configurator on www.montech.com, it is even easier and more intuitive to define the desired belt configuration," says Gianluca Aloisi, Manager Conveyors Division.

The configurator (currently available in the second version) has been developed in collaboration with Inter Office GmbH in Dresden. "The simple and intuitive process that guides the user and the capacity to generate an order for a complex conveyor in just a couple of minutes will help Montech address a wider and wider spectrum of customers," says René Kirchbach, General Manager of Inter Office.

Conveyors based on standard components

The belt conveyors in standard, Minidrive and Maxi versions are designed to carry parts to or from the various manufacturing stations or they are combined to form complete production lines. The conveyors have standard widths included between 45 and 800 mm and they can carry up to 125 kg weight, while their length can be selected freely up to 15 meters in one millimeter steps.

Traditional conveyors are based on a modular concept with ready-to-use standard components for specific functions. Thanks to their modularity, the conveyors can be assembled in variable configurations, extended or shortened with a simple and cost-effective approach. "With their modular construction, all belt conveyors by Montech are very suitable for customer-specific transport solutions," underlines Aloisi.

Uninterrupted heavy-duty operation

All metal parts of Montech belts are made of nickel steel or stainless steel; the transmission rollers are normally made of stainless steel, while the driving rollers are provided with a special rubber cladding. The materials used are compatible with heavy-duty applications in continuous operation.

Montech AG markets basic modular components that automate demanding production and logistics processes. In addition to conventional conveyor belts, automation components and the Quick-Set profile system, the range of products also includes the Montrac transport system. Montrac is an intelligent transport system for networking industrial production and logistics processes. Founded in 1963, the company is based in Switzerland and stands for innovation in the automation industry.

Montech AG
Gewerbstrasse 12
CH-4552 Derendingen
Telefon: +41 32 681 55 00
Fax: +41 32 682 19 77
www.montech.com
E-Mail: info@montech.com

Press contact:
Elke Manthei
Telefon: +41 32 681 55 42
E-Mail: elke.manthei@montech.com

[You can find this press release here](#)